

BtL Online Backup

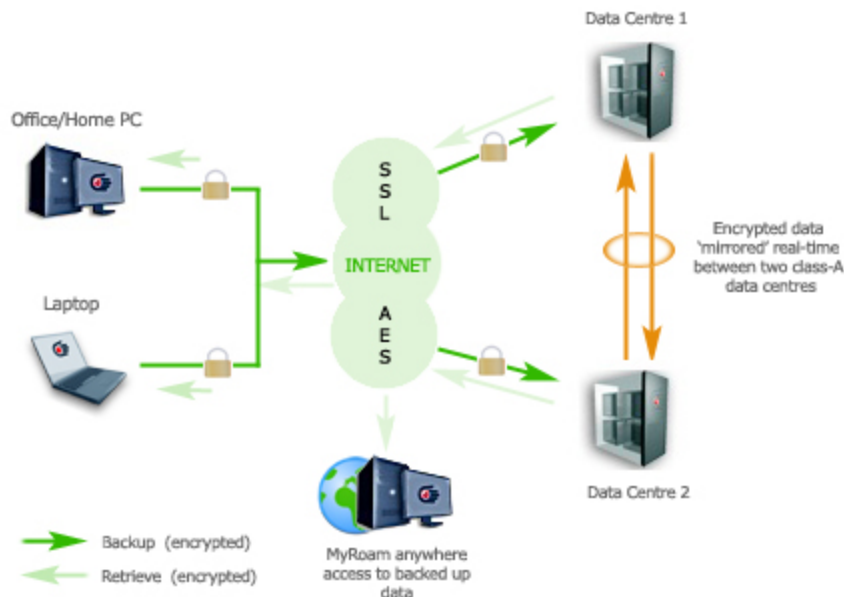
Overview

Recent research has found that hardware or system failure accounts for 78% of all data loss as a result of not having a secure and reliable backup system. To address this problem BtL have launched BtLOnline backup to prevent companies from losing precious data. We believe this is such an important service that we are offering the service **Free of Charge** until September 2010*.

BtL's Online backup also known as remote backup, is a method of offsite data storage in which files, folders, or the entire contents of a hard drive are automatically backed up nightly to a remote server via your internet connection.

Features

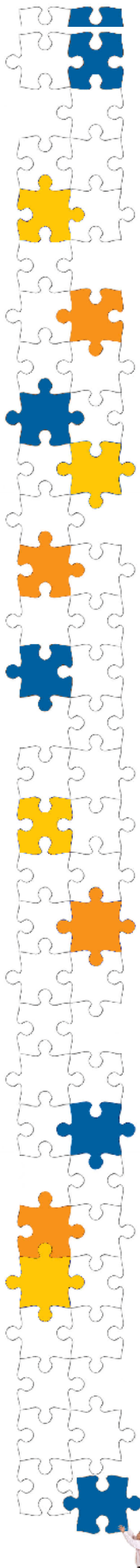
With our online backup we have two types of this product, they are BtL online backup home and BtL online backup professional, and these are the following features below.



BtL's Online Backup Home

Key Features:

- Support for Microsoft (.Net framework (1.1)
- Windows 2000 Professional, XP all versions (32bit/64bit),
- Vista all versions (32bit/64bit)
- Support for MAC OS X (Java 1.5 or higher)
- 10.4.10 and higher (Tiger 32bit/64bit)
- 10.5.0 and higher (Leopard 32bit/64bit)
- The safe and secure storage of data using 256bit AES encryption
- The ability to access to your backed up files anywhere, anytime via the client software or web portal
- Automatic backup schedules, user selectable (hourly, daily, weekly, or monthly)
- The ability to select your own files for safe storage
- Shortcuts for the backup of documents, System State and favourites
- Shortcuts for the backup of e-mail (Outlook)
- Shortcuts for the backup of open Files
- Easy to backup and restore data using user friendly GUI



BtL's Online Backup Professional

Key Features:

- Support for Microsoft (.Net framework (1.1)
- Windows 2000 Professional, XP all versions (32bit/64bit), Vista all versions(32bit/64bit)
- Windows Server 2000 32bit, 2003 all versions (32bit/64bit) and 2008 all versions (32bit/64bit)
- Windows MS SQL 2000 and 2005
- The support for Hot backup of open files
- Windows MS Exchange 2000, 2003 and 2007
- The support for folder level backup option to facilitate an easy backup and fast
- Restore of individual mailboxes, contacts, calendars etc.
- Support for Linux (Java 1.5 or higher)
- RedHat, SuSE, Debian (and Debian based systems) (32bit/64bit)
- MySQL
- Support for MAC OS X (Java 1.5 or higher)
- 10.4.10 and higher (Tiger 32bit)
- 10.5.0 and higher (Leopard 64bit)
- The safe and secure storage of data using 256bit AES encryption
- The ability to access to your backed up files anywhere, anytime via the client software or web portal
- Automatic backup schedules, user selectable (hourly, daily, weekly, or monthly)
- Ability to select your own files for safe storage
- Shortcuts for the backup of documents, System State and favourites
- Shortcuts for the backup of e-mail (Outlook all versions)
- Shortcuts for the backup of open files
- Easy to backup and restore data using user friendly GUI

Pricing

BtL's pricing is simple, please see below.

Product	Monthly
BtL Online Backup Desktop Account (inc 20GB	£6.00
BtL Online Backup Professional (inc 20GB storage)	£20.00
Additional storage per 20Gb	£7.50

Platform

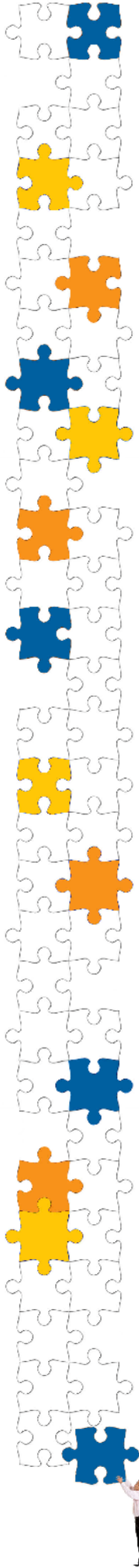
The BtL Online Backup application is built on BtL's fully redundant cloud services platform. The platform is based on VMware vSphere and is built on top of the latest blade server, storage and network technologies.

The data is replicated to a secondary BtL Data Centre. The application is fault tolerant running on multiple virtual servers with High Availability features enabled.

Conclusion

BtL online backup is crucial and could make or break your business. There is no need to spend hours of precious business time manually backing up detail. Why take the risk of losing your businesses valuable data when it is easy and cost effective to prevent? Call us today if you want your business to become one of the 22% that have a secure and reliable back up strategy.

BtL can save your businesses data.



FAQ's

Q. Does the service only back up my net changes or the whole folder?

A. yes it only backs up files that have a new modified date.

Q. How secure is online desktop?

A. BtL's Online Backup service is extremely secure and subject to private key encryption. This means the data stored on the BtL Online Backup platform is in a 256 bit AES encrypted format that is not visible to BtL staff or partners.

Q. Can it be used anywhere?

A. You can access your backed up files anywhere, anytime via the client software or web portal.

Q. What is the maximum amount of data that I can backup?

A. There is no limit on storage allocation available, backup data amounts can include 20GB, 50GB, 100GB depending on the amount of data your company needs to store.

Q. I have a firewall in place - will I still be able to backup?

A. You may need to change your firewall settings to allow the data through.

Q. If I don't back up my data daily or weekly will it be automatically done for me?

A. Automatic backup schedules are available, automatic schedules can be hourly, daily, weekly, or monthly depending on your companies needs.

Q. Can I access backed up data at anytime?

A. Yes

Contact Us!

: 0800 011 4088
: 0845 450 2101

Email: info@btlc.co.uk
Web: www.btlc.co.uk

Manhattan House, 140 High Street, Crowthorne, Berkshire, RG45 7AY
Registered in England & Wales: Company Number 4264142